

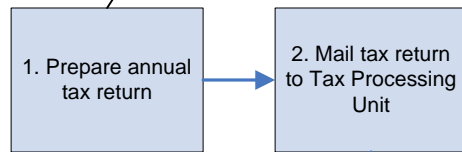
As-Is Process PT1 – Premium Annual Tax Returns

Wednesday, May 06, 2009

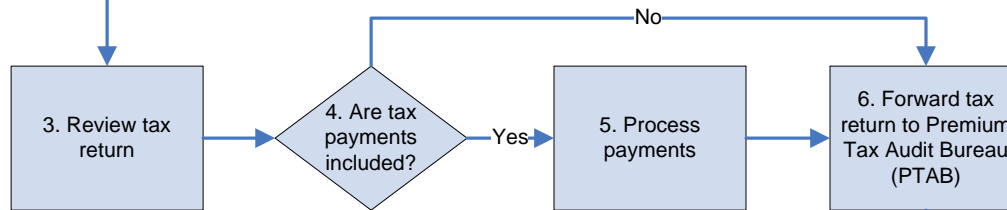
Triggers	Systems	Inputs	Outputs
<ul style="list-style-type: none"> Annual tax returns are received from Insurers and Surplus Line Brokers for PC, Home, Life, Title, and Ocean Marine 	<ul style="list-style-type: none"> Tax Tracking System (MS Access db) 	<ul style="list-style-type: none"> Annual tax return 	<ul style="list-style-type: none"> Proposed Deficiency Assessment (PDA) Claim for Refund (CFR) Penalty & Interest (P&I) Notice of Late Payment Notice of Deficiency Assessment

Insurer / Surplus Line Broker

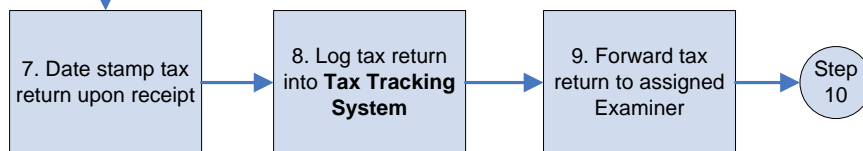
Surplus Lines due 3/01;
PC, Home, Life, Title due 4/01;
Ocean Marine due 6/15



Tax Processing Unit



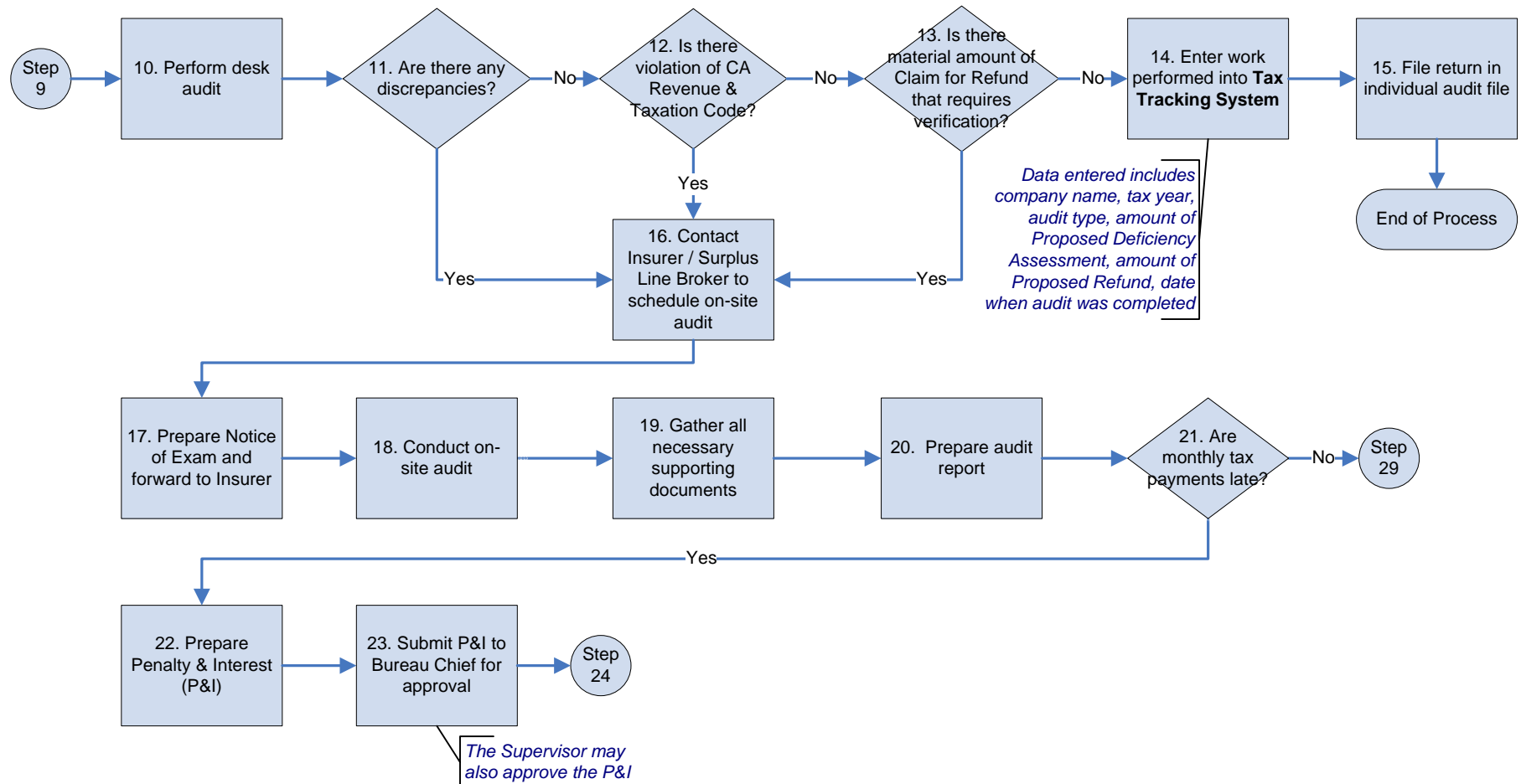
Premium Tax Audit Bureau



As-Is Process PT1 – Premium Annual Tax Returns

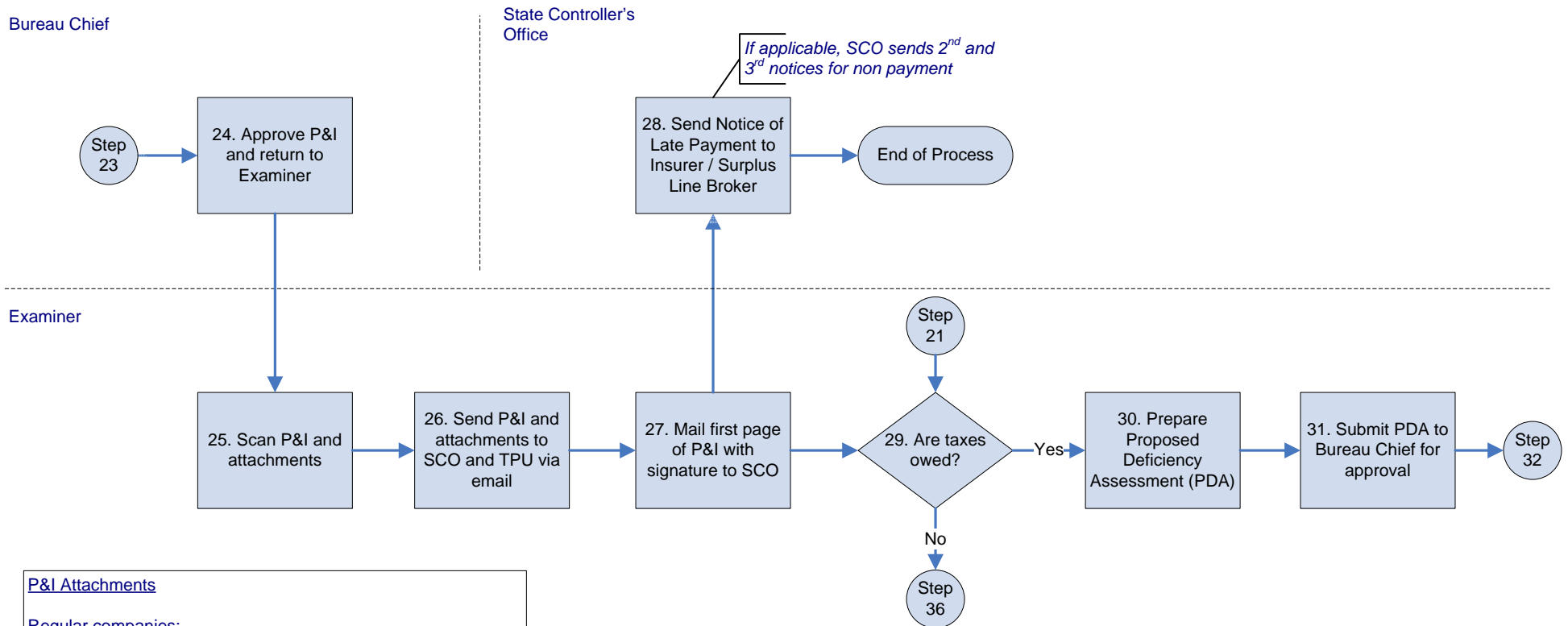
Wednesday, May 06, 2009

Examiner



As-Is Process PT1 – Premium Annual Tax Returns

Wednesday, May 06, 2009



P&I Attachments

Regular companies:

1. Calculation worksheet
2. Company' premium base calculation
3. Copy of company's payment history
4. Others – various documents as applicable

Surplus Lines:

1. Calculation worksheet
2. Company's Bordereau Report
3. Premium Tax Review account summary of findings
4. Copy of company's payment history
5. Copy of check payment if P&I was paid and received by PTAB
6. Others – various documents as applicable

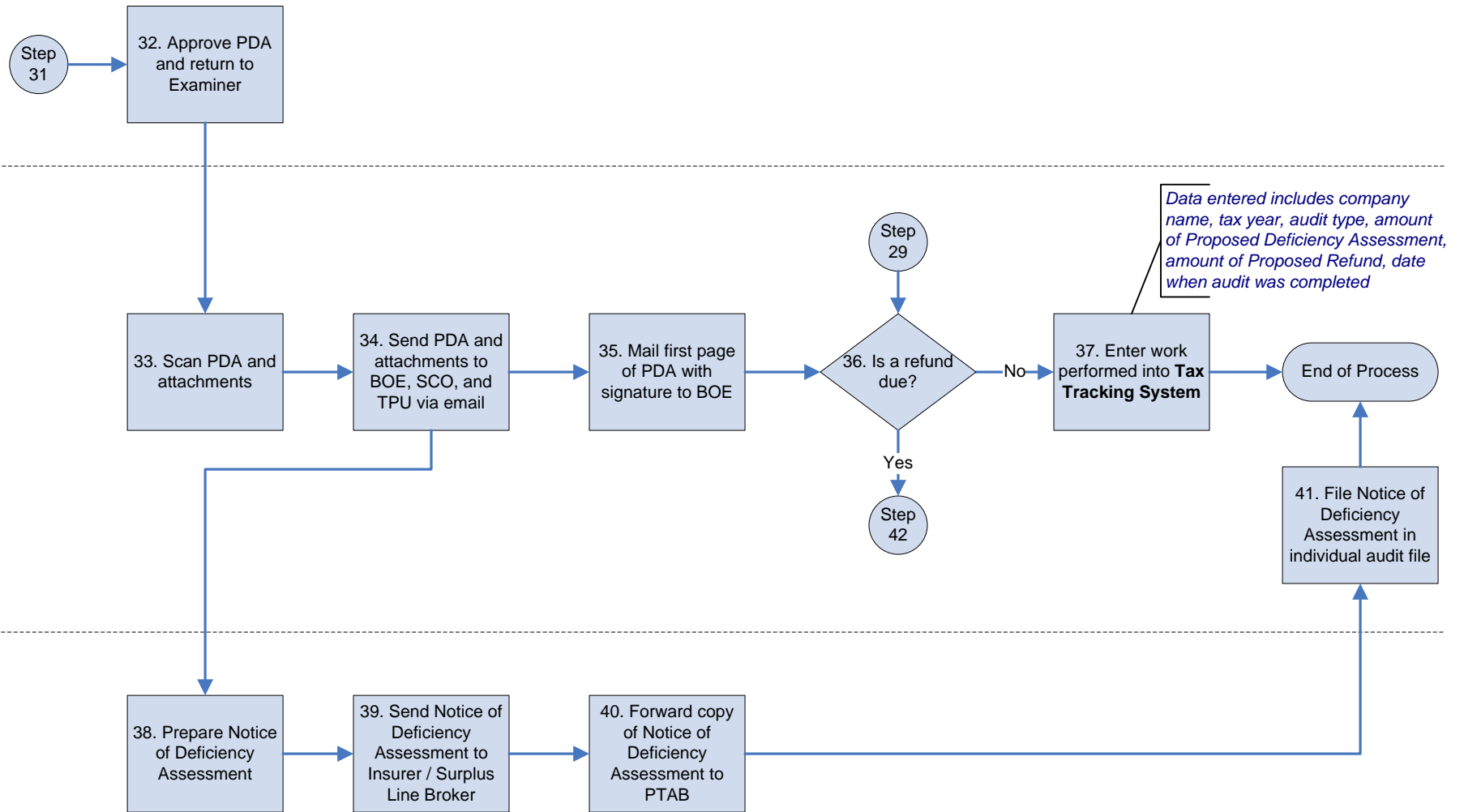
As-Is Process PT1 – Premium Annual Tax Returns

Wednesday, May 06, 2009

Bureau Chief

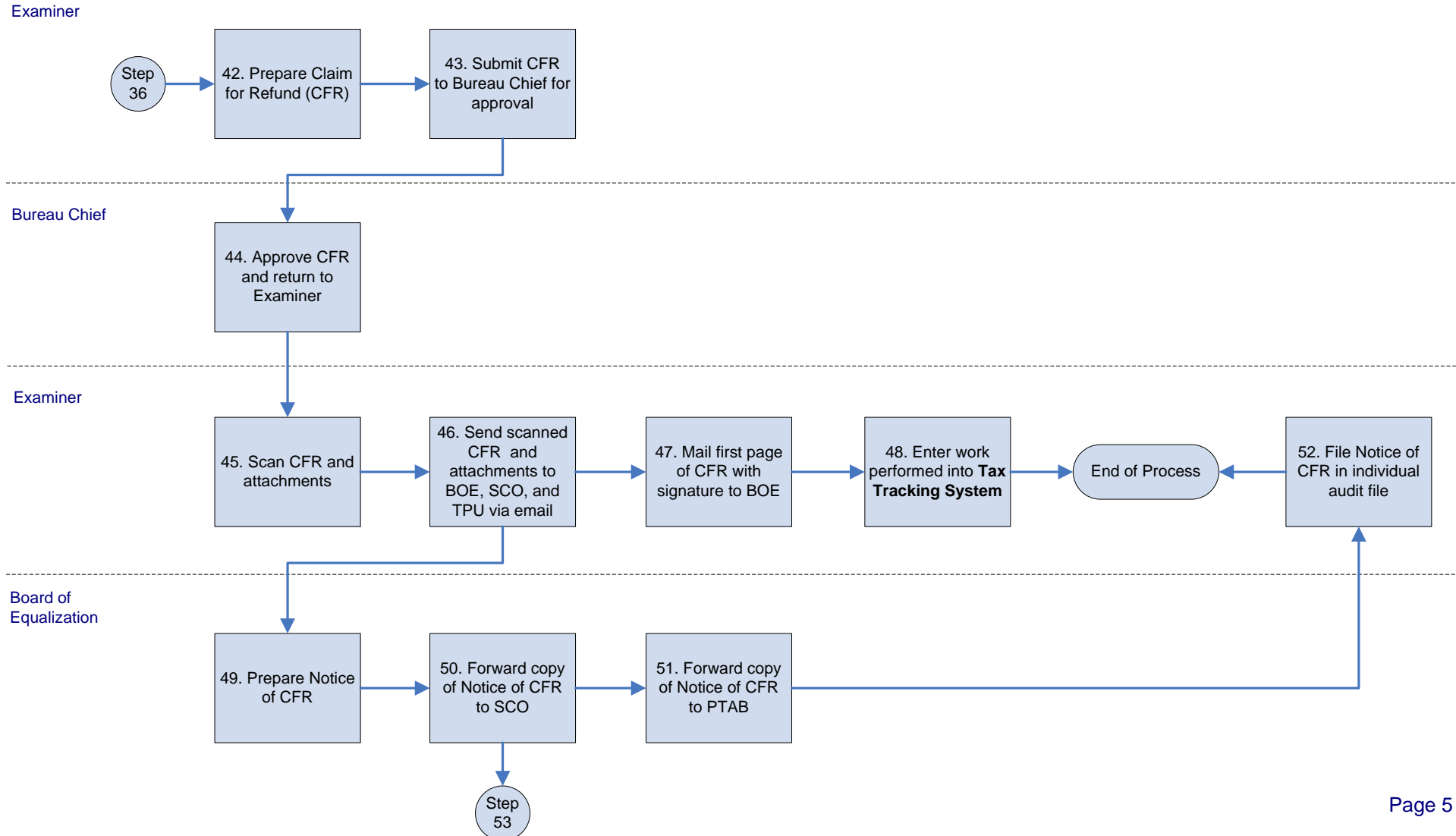
Examiner

Board of Equalization



As-Is Process PT1 – Premium Annual Tax Returns

Wednesday, May 06, 2009



As-Is Process PT1 – Premium Annual Tax Returns

Wednesday, May 06, 2009

State Controller's
Office

